



C - PS



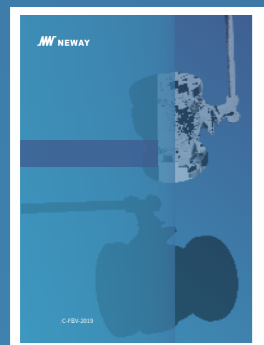
C - GGC



C - FSV



C - TMBV



C - FBV



C - CBV



C - MMBV



C - FWBV



C - BFV



C - DOV



C - TOV



C - CPS

**JW NEWAY**

**JW NEWAY**

666

0512-666-21954

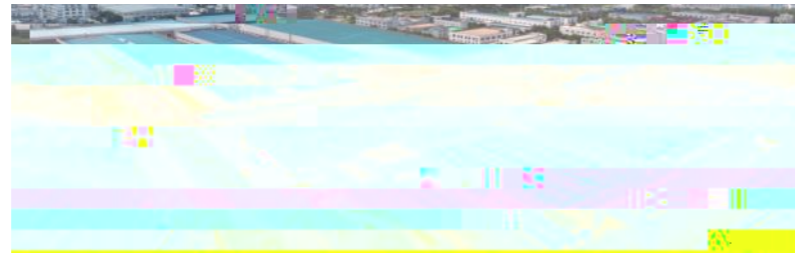
Domestic.sales@neway.com.cn

<https://www.neway.com.cn/>

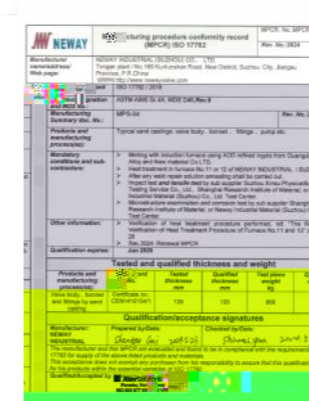
:C-PGV-2025

:C-PGV-2025





603699)



NORSOK



ISO9001



CE/PED



TA Luft



ABS



AD2000

1 1 3 1 1 230,000

Ansys Fe-safe CF-design SiemensPLM NX

SAP

80

ISO API

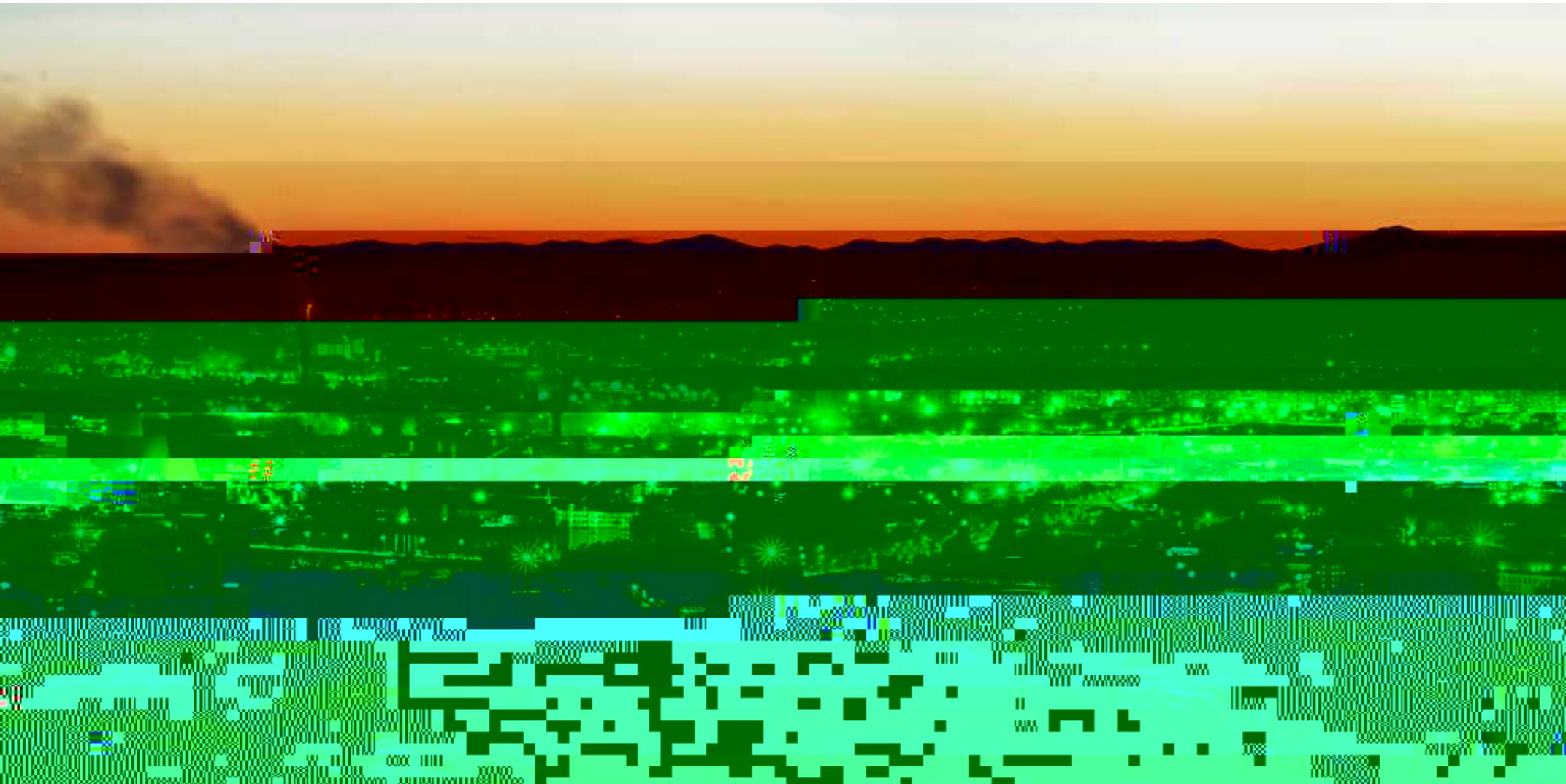
ISO 9001 , API 6A, API 6D, API 600

CE-PED AD2000 TA-Luft,

API 624, ISO 15848

API 607, API 6FA

- 1
- 2-9
- 10-17
- 18
- 19
- 20



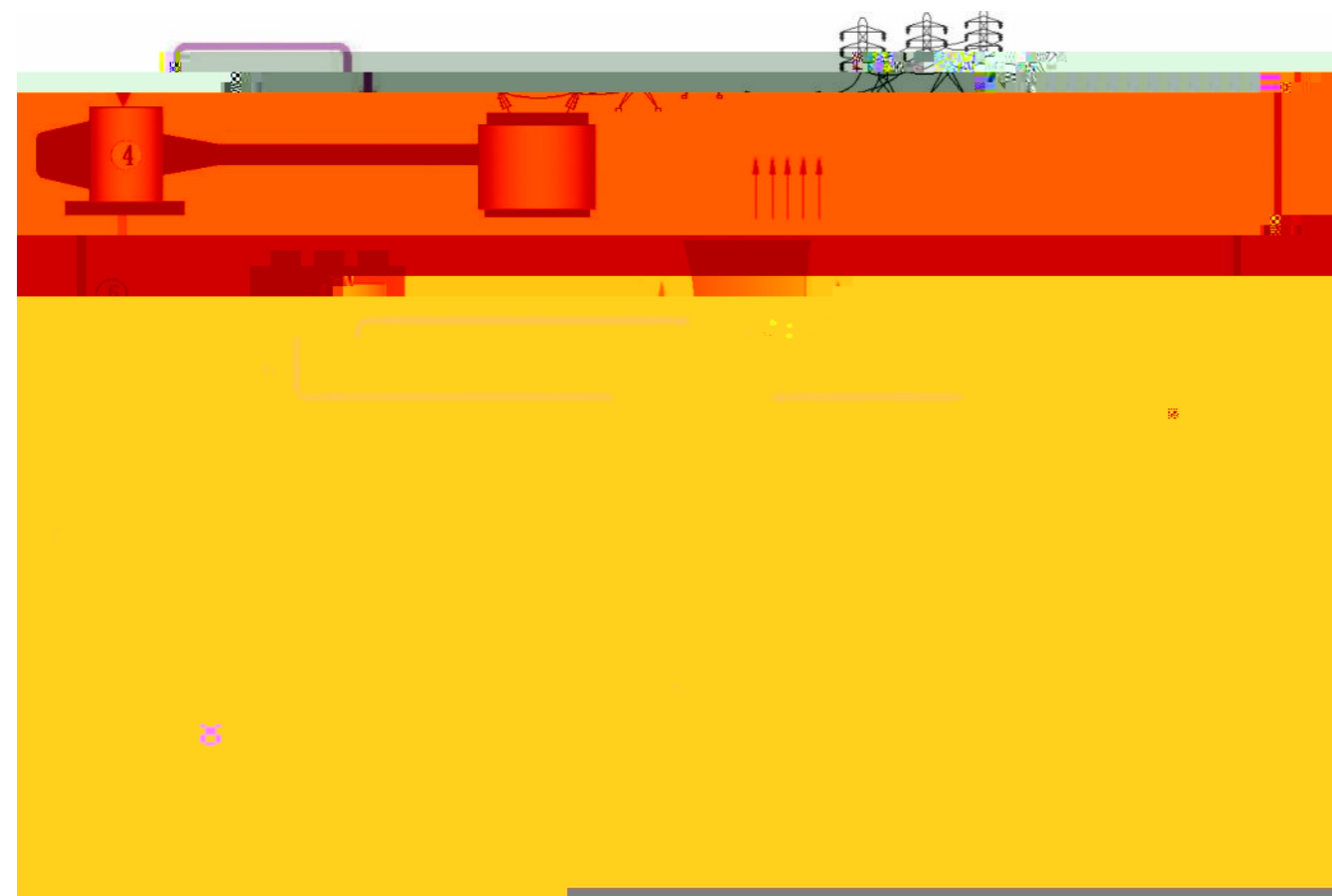
60%。

/ /

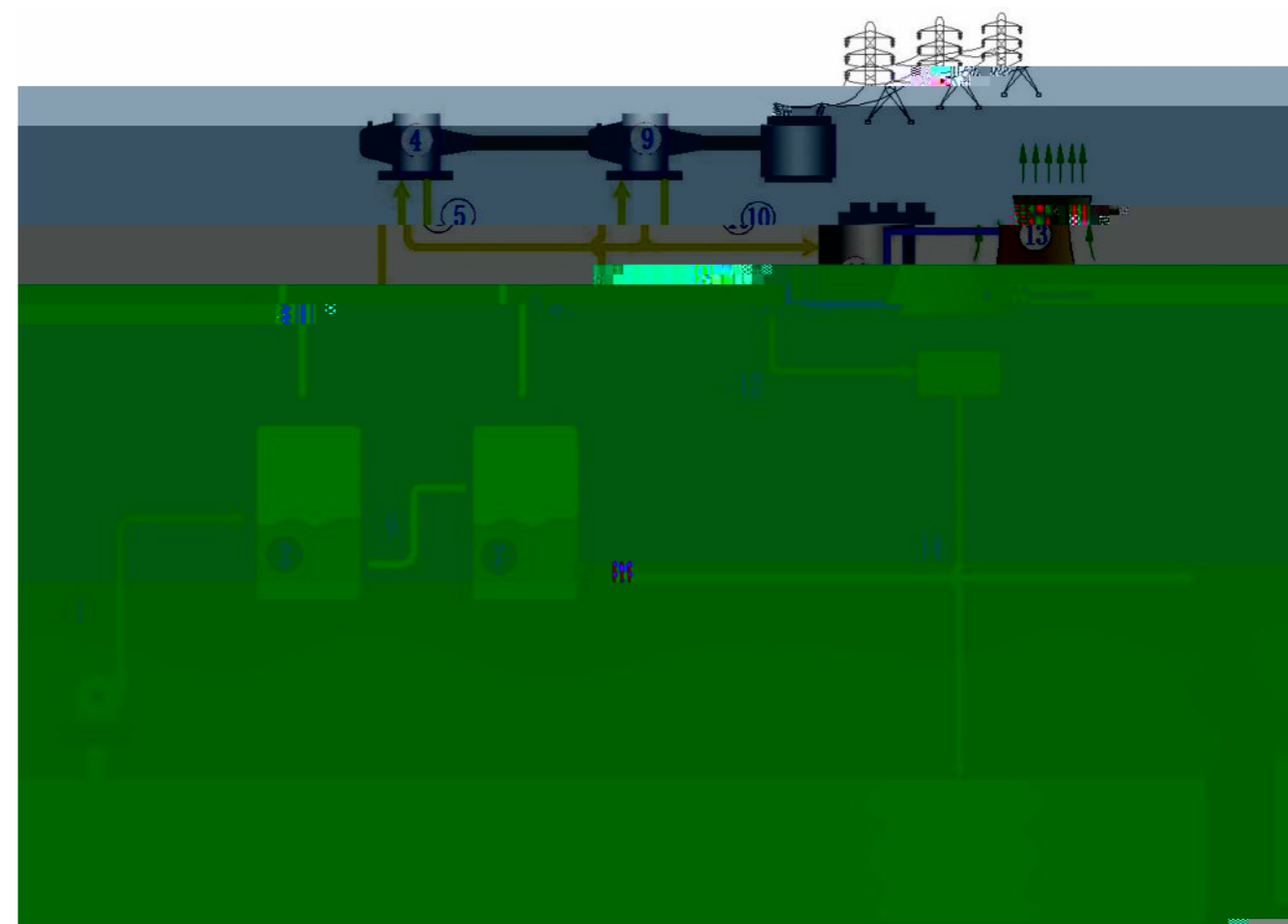




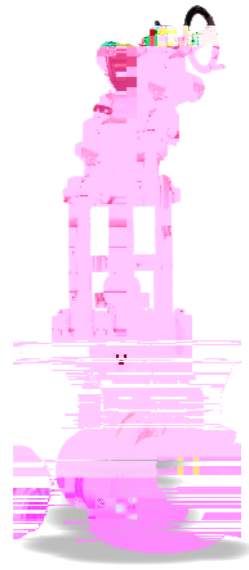




- 1. ●
- 2. ●
- 3. ●
- 4. ●
- 5. ●
- 6. ●
- 7. ●
- 8. ●



- 1. ●
- 2. ●
- 3. ●
- 4. 高压 ●
- 5. ●
- 6. ●
- 7. ●
- 8. ●
- 9. ●
- 10. ●
- 11. ●
- 12. ●
- 13. ●
- 14. ●



2"~30"(DN50~DN750)

CLASS900~CLASS 4500(PN150~PN760)

WCB/WC6/WC9/C12A/CF3M/CF8M/A105/F11/F22/F36/F91/  
F92/F304/F304L/F304H/F316/F316L/F316H/F321/F347

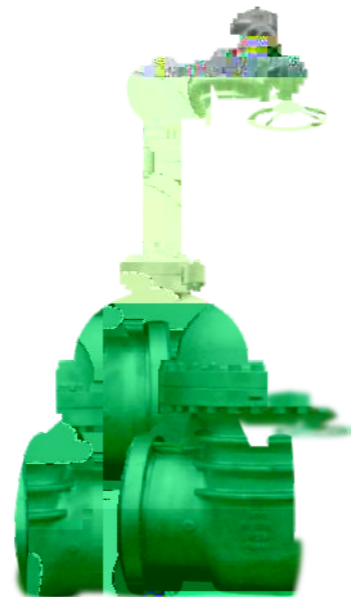
- 
- 
- 
- 

2"~28"(DN50~DN700)

CLASS 300~CLASS 4500(PN50~PN760)

WCB/WC6/WC9/C12A/CF3M/CF8M/A105/F11/F22/F36/F91/  
F92/F304/F304L/F304H/F316/F316L/F316H/F321/F347

- Class 300~600:
- Class 900~4500:
- 
- 
- 
- 



2"~24"(DN50~DN600)

CLASS 300~CLASS 4500(PN50~PN760)

WCB/WC6/WC9/C12A/CF3M/CF8M/A105/F11/F22/F36/F91/  
F92/F304/F304L/F304H/F316/F316L/F316H/F321/F347

- 
- 
- 
- 
- 
- 

API6D

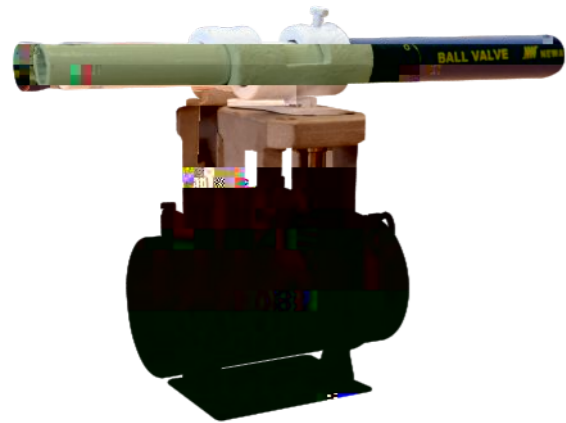
1/2"~2-1/2"(DN15~DN65)

CLASS 1500~CLASS 4500(PN250~PN760)

A105/F11/F22/F36/F91/F92/F304/F304L/F304H/F316/  
F316L/F316H/F321/F347

- T
- CLASS>1700lb
- 
- 





1/2"~24"(DN15~DN600)  
 CLASS900~CLASS 4500(PN20~PN760)  
 WCB/WC6/WC9/C12A/CF3M/CF8M/A105/F11/F22/F36/F91/  
 F92/F304/F304L/F304H/F316/F316L/F316H/F321/F347

- 
- 
- 
- 
- 
- 

WCB / WC6 / WC9 / C12A / CF3M / CF8M

3"~60"(DN80~DN1500)  
 CLASS 150~CLASS 600(PN20~PN110)  
 WCB/WC6/WC9/C12A/CF3M/CF8M

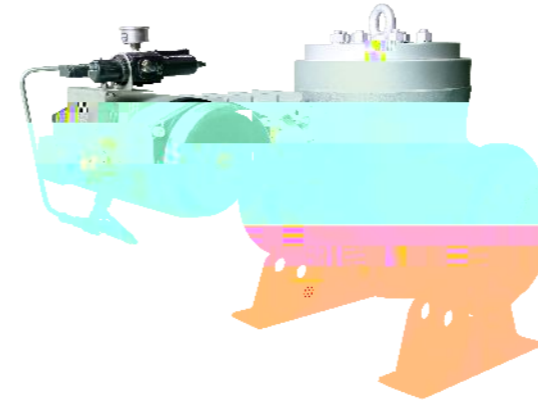


- 
- 
- 
- 
- 
- 

ISO 15848

API 607

3

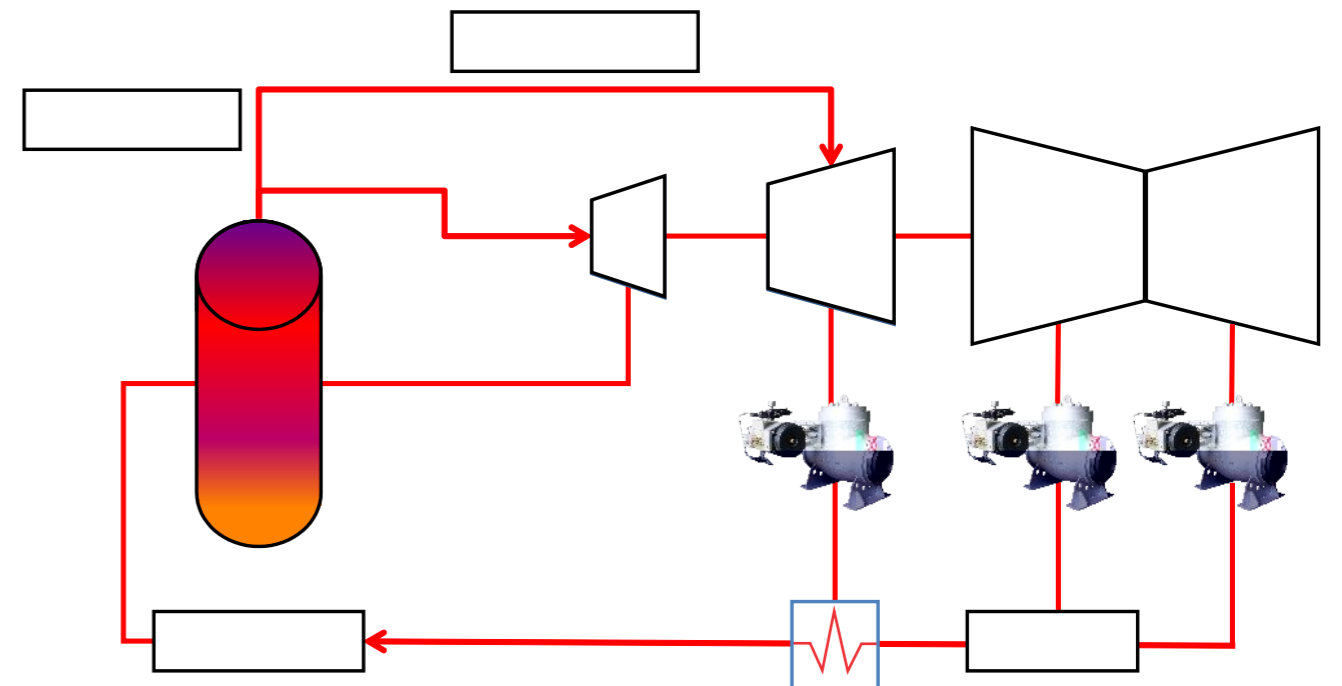


6"~42"(DN150~DN1050)  
 CLASS 150~CLASS 2500(PN20~PN420)  
 WCB/WC6/WC9/C12A/CF3M/CF8M/A105/F11/F22/F36/F91/  
 F92/F304/F304L/F304H/F316/F316L/F316H/F321/F347

- 
- 
- 
- 
- 
- 

1s),

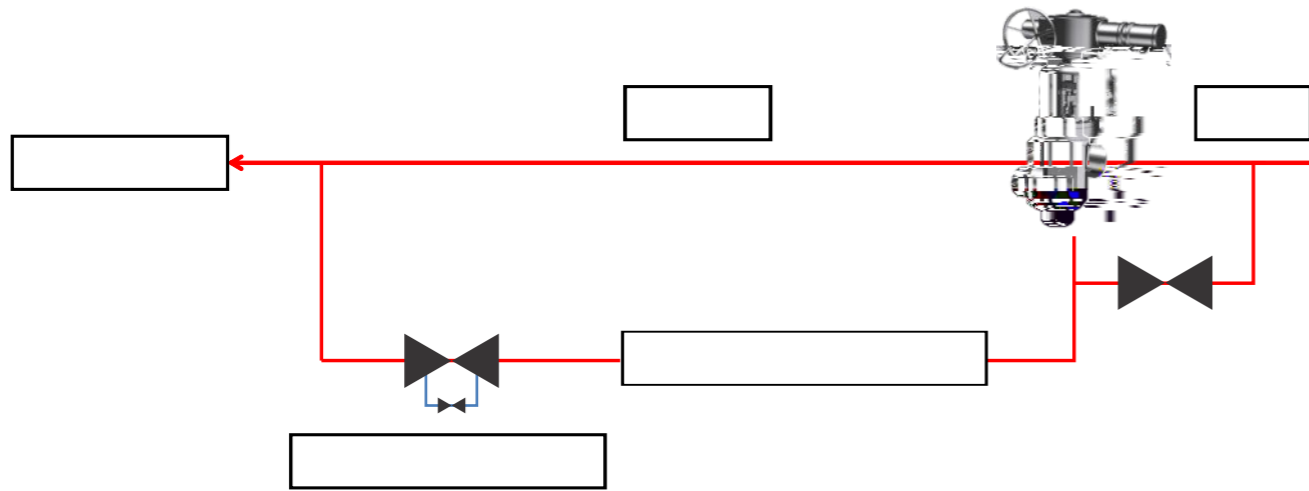
<80°C。





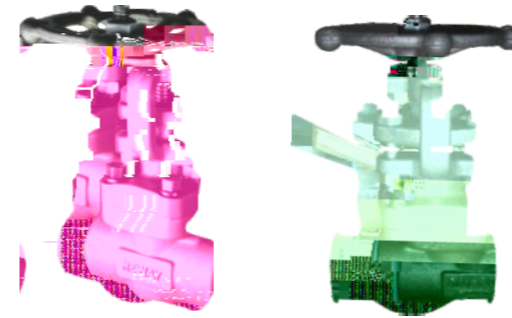
2"~24" (DN50~DN600)  
 CLASS 900~CLASS 3500 (PN150~PN600)  
 WCB/WC6/WC9/C12A/CF3M/CF8M/A105/F11/F22/F36/F91/  
 F92/F304/F304L/F304H/F316/F316L/F316H/F321/F347

- 
- 
- 
- 
- 



- 
- 

+ +



1/2"~2" (DN15~DN50)  
 CLASS 150~CLASS 1500 (PN20~PN250)  
 A105/F11/F22/F36/F91/F92/F304/F304L/F304H/F316/  
 F316L/F316H/F321/F347

- 
- 
- 
- 
- 
- 
- 

4"~8" (DN100~DN200)  
 CLASS 150~CLASS 900 (PN20~PN150)  
 WCB/WC6/WC9/C12A/CF3M/CF8M/A105/F11/F22/F36/F91/  
 F92/F304/F304L/F304H/F316/F316L/F316H/F321/F347

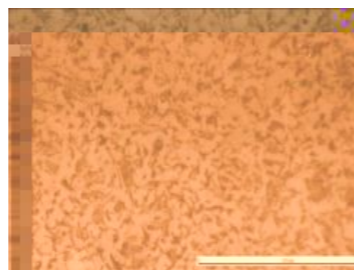
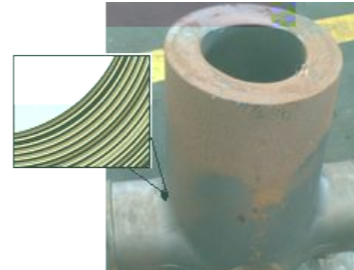
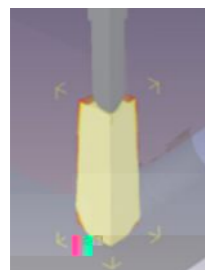
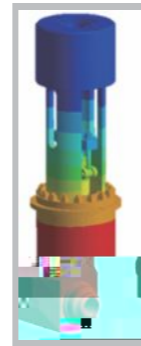
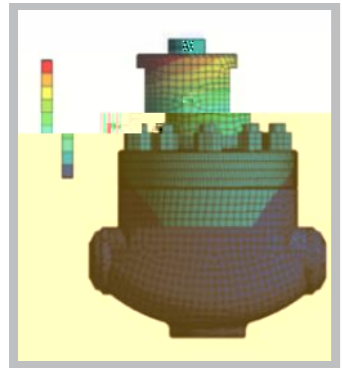
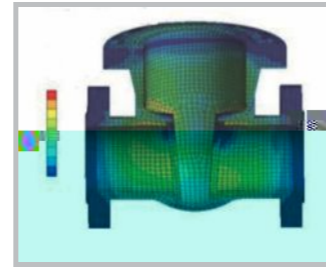
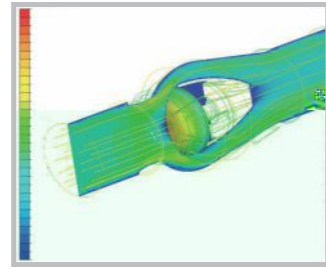
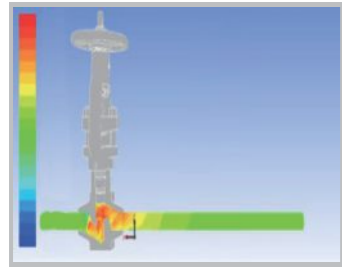
- 
- 
- 
- 
- 
- 
- 





Cv

Cv

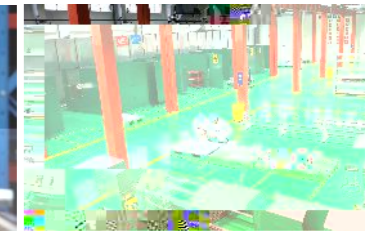
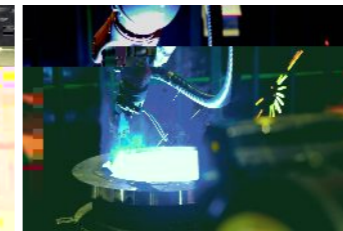


PMI、

RT)、

MT)、

UT)、



3D



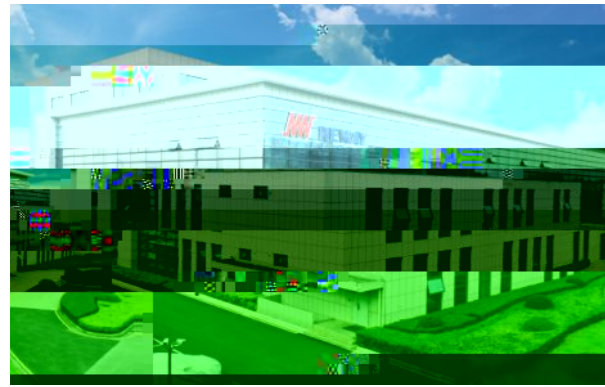
NHO分析

DR



- 96

RT



成立于2014年

2,295



2006  
2013

230,000  
140,061



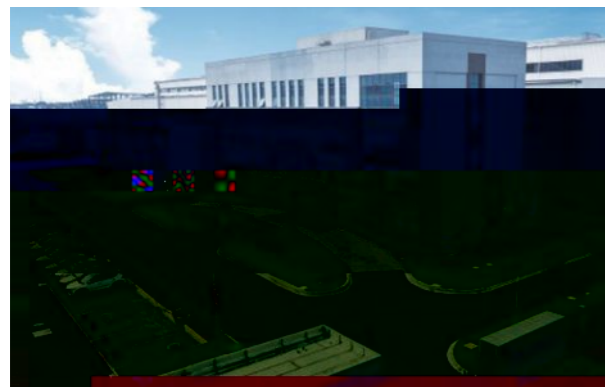
2008  
2015

112,500  
98,000



2008

40,000  
20,000



2017

3,000  
30,000



2020

30,000  
19,000 ( )  
7,000 ( )



18

12

( )